

PRH129



FEATURES 特点

- * Excellent solderability and high heat resistance
良好的可焊性和高耐热性

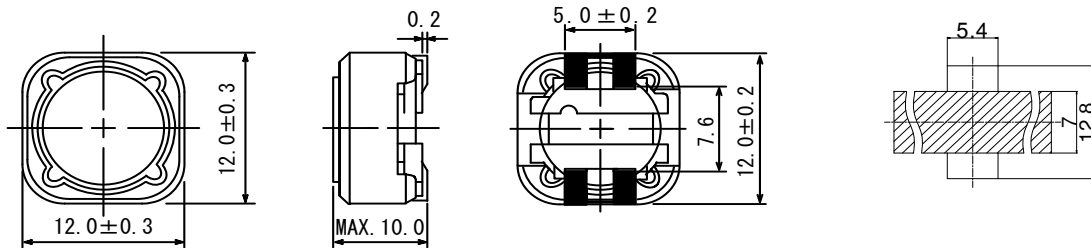
APPLICATION 用途

- * DC / DC 转换器

MEASURING FREQUENCY 测试频率

- * 100KHz 0.3V

Shapes And Dimensions 外形及尺寸示意图



Electrical Characteristics 电气性能

Type 型號	Indicate 表示	Inductance 電感值	D.C.R(Max) 直流電阻	Rated Current(Max) 額定電流
PRH129-1 R2	1R2	1.2 μ H \pm 30%	7.0(5.2)	11.2
PRH129-2 R2	2R2	2.2 μ H \pm 30%	9.05(7.8)	10.5
PRH129-3 R9	3R9	3.9 μ H \pm 30%	14.2(10.9)	9.58
PRH129-4 R7	4R7	4.7 μ H \pm 30%	15.8(11.7)	8.36
PRH129-6 R1	6R1	6.1 μ H \pm 30%	17.6(13.0)	7.25
PRH129-7 R6	7R6	7.6 μ H \pm 30%	20.0(15.0)	6.56
PRH129-10 0	100	10 μ H \pm 30%	21.6(16.0)	5.48
PRH129-12 0	120	12 μ H \pm 30%	24.3(18.0)	4.90
PRH129-15 0	150	15 μ H \pm 30%	27.0(20.0)	4.56
PRH129-18 0	180	18 μ H \pm 30%	39.2(29.0)	3.95
PRH129-22 0	220	22 μ H \pm 30%	43.2(32.0)	3.66
PRH129-27 0	270	27 μ H \pm 30%	45.9(34.0)	3.48
PRH129-33 0	330	33 μ H \pm 30%	64.8(48.0)	3.28
PRH129-39 0	390	39 μ H \pm 30%	72.9(55.0)	3.15
PRH129-47 0	470	47 μ H \pm 30%	90.0(76.0)	2.98
PRH129-56 0	560	56 μ H \pm 30%	106(83.0)	2.85
PRH129-68 0	680	68 μ H \pm 30%	120(95.0)	2.72
PRH129-82 0	820	82 μ H \pm 30%	135(120)	2.52
PRH129-10 1	101	100 μ H \pm 30%	160(170)	2.22
PRH129-12 1	121	120 μ H \pm 30%	180(180)	2.08
PRH129-15 1	151	150 μ H \pm 30%	225(210)	1.65
PRH129-18 1	181	180 μ H \pm 30%	280(250)	1.55
PRH129-22 1	221	220 μ H \pm 30%	320(260)	1.45

* SPQ:300PCS/REEL

The sample parameters are based on actual measured values